

# Years 7-9 Science Workbook



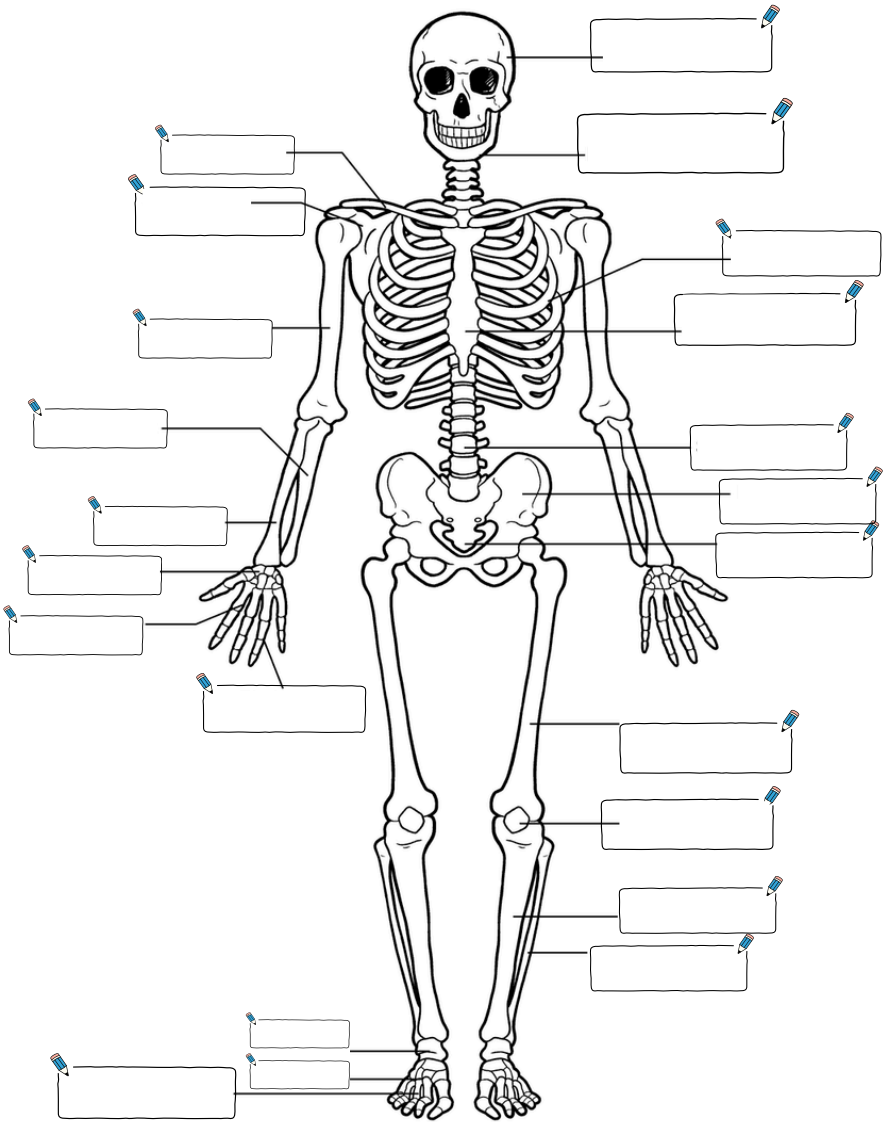
## Biology Body Systems



Part 1

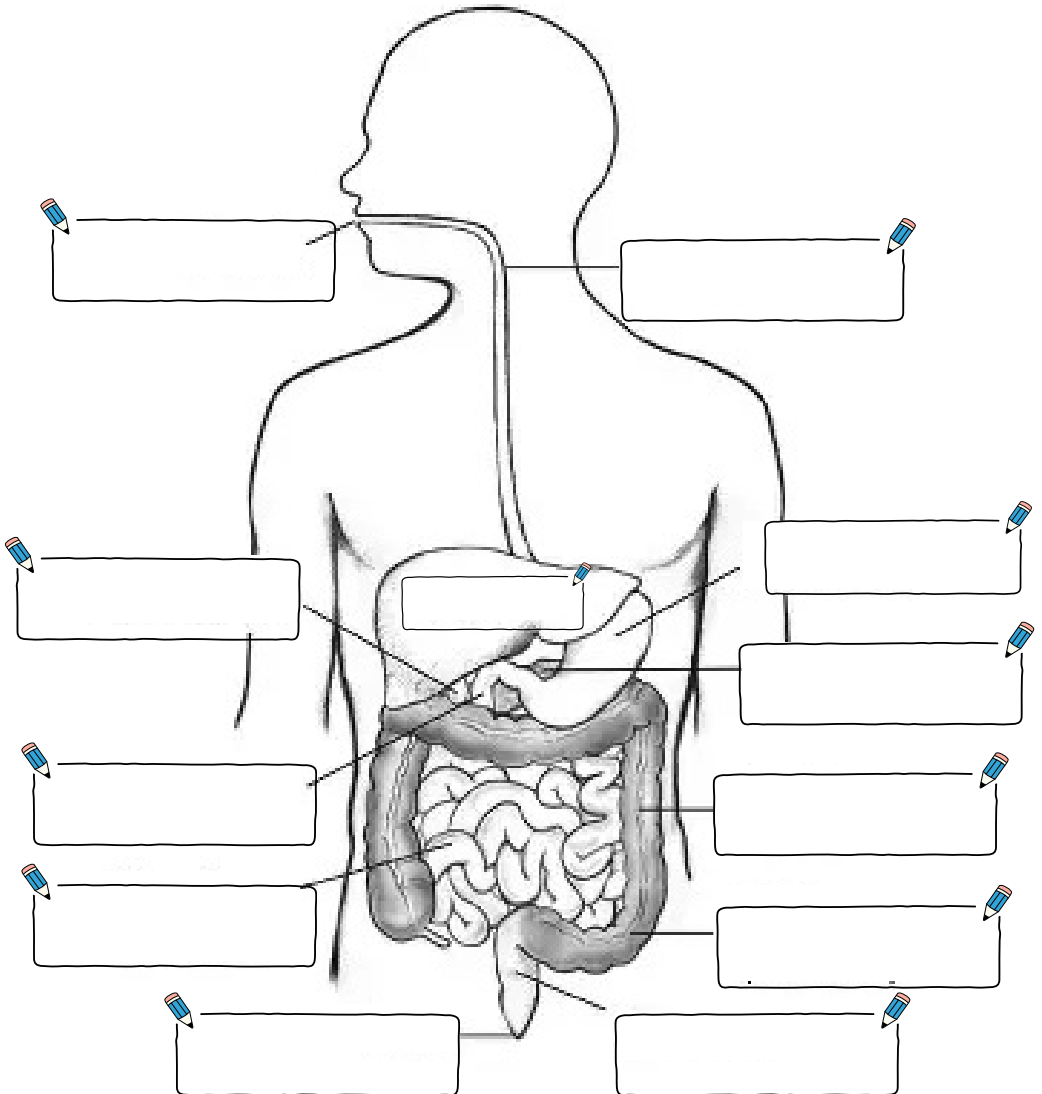
# Human Skeleton

Label the diagram below.



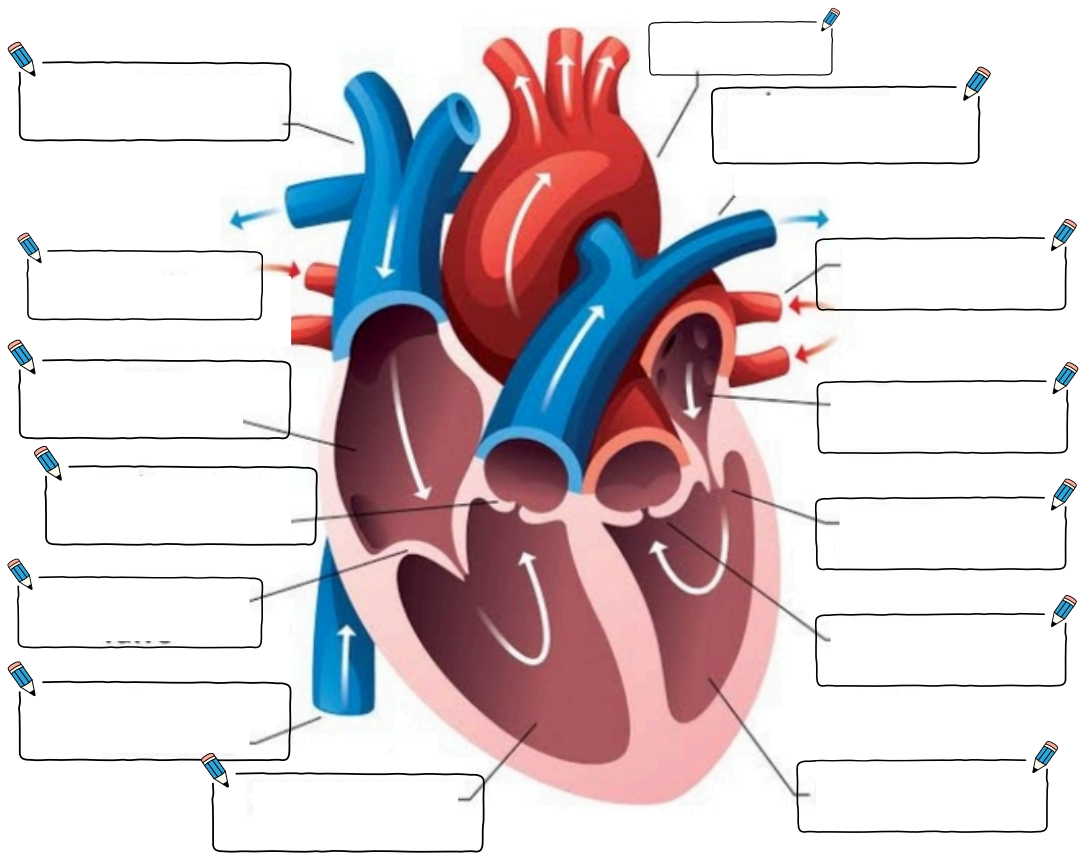
# Digestive System

Label the diagram below.



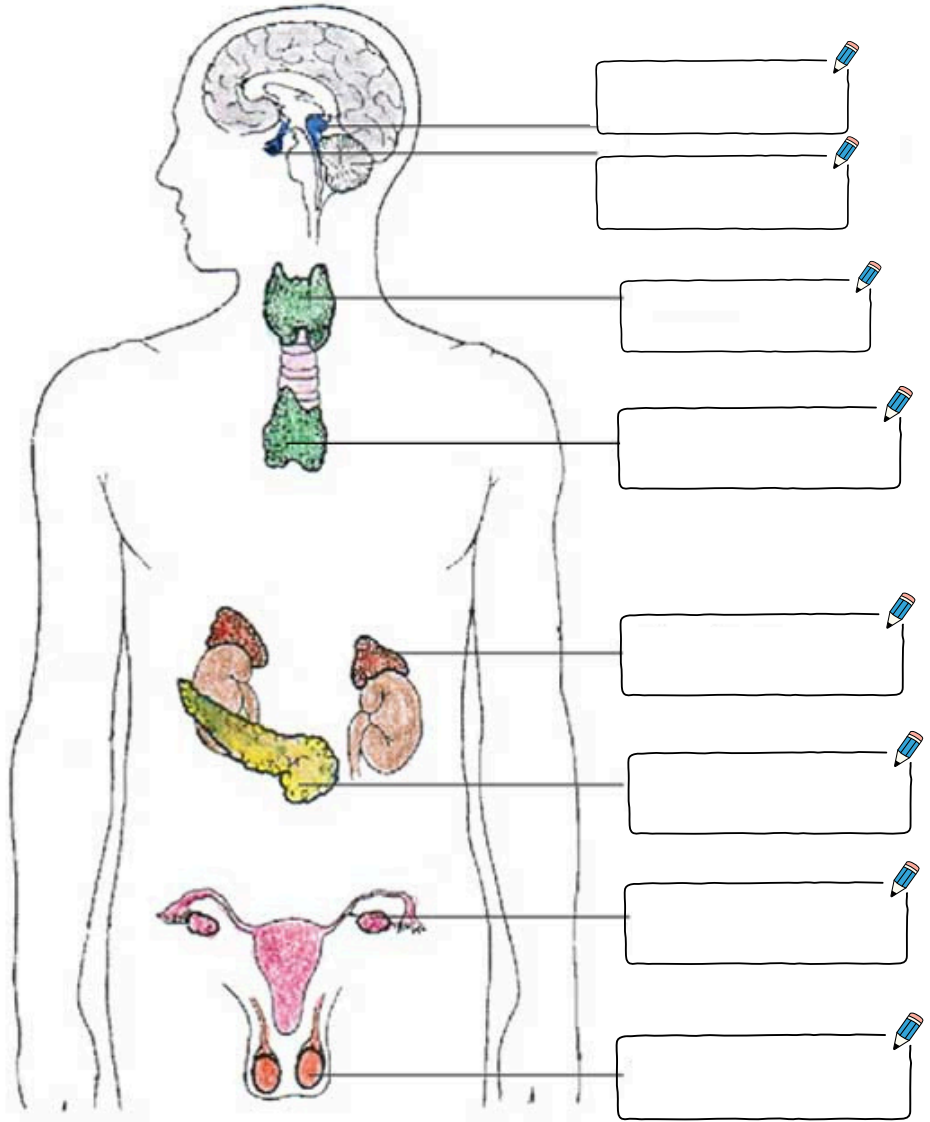
# Anatomy of the Heart

Label the diagram below.



# Endocrine System

Label the diagram below.



# Word Bank

## Human Skeleton

Sternum      Metatarsals      Clavicle      Phalanges  
Scapula      Carpals      Phalanges      Femur      Skull  
Ulna      Coccyx      Radius      Mandible  
Humerus      Metacarpals  
Tibia      Rib  
Fibula      Patella      Pelvis      Spine      Tarsals

## Digestive System

Mouth      Liver      Duodenum      Stomach  
Gallbladder      Pancreas  
Esophagus      Small Intestine      Colon      Large Intestine  
Rectum      Anus

## Anatomy of the Heart

Superior Vena Cava      Inferior Vena Cava  
left ventricle      tricuspid valve      pulmonary vein  
aorta      Pulmonary valve      mitral valve      left atrium  
pulmonary atrium      Right ventricle      pulmonary artery

## Endocrine System

thyroid      adrenal cortex      pancreas      Pineal gland  
testes (male)      thymus      Ovary (female)  
Posterior Pituitary Gland