

.....

Renewable and Non-Renewable Resources



Activity 1

Renewable Energy Sources

Identify the specific energy described on each card. Write your answer in the space provided.

This is the energy created from moving or falling water.

ANSWER:

Moving air that works with turbines to convert it into mechanical power.

ANSWER:

This energy comes from inside of the Earth.

ANSWER:

This energy source comes from organic material formed from decaying plants and animals.

ANSWER:

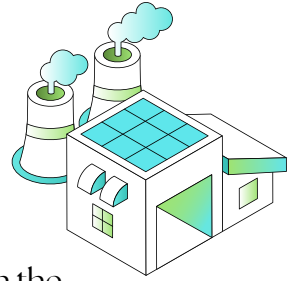


This type of energy comes from the sun.

ANSWER:

Activity 2

Non-Renewable Energy Sources



Draw a line from Column A to Column B to match the descriptions.

Column A

A black or dark brown sedimentary rock that is a combustible fuel source.

Minerals that are cut and polished, to be used as materials for jewellery and semiconductors.

A metal found in the Earth's crust, used as fuel in reactors of nuclear power plants.

A fuel formed from the remains of ancient marine organisms, processed into products such as petrol.

A mixture of minerals and organic matter, where plants grow and water flows.

Column B

Coal



Petroleum



Soil



Uranium

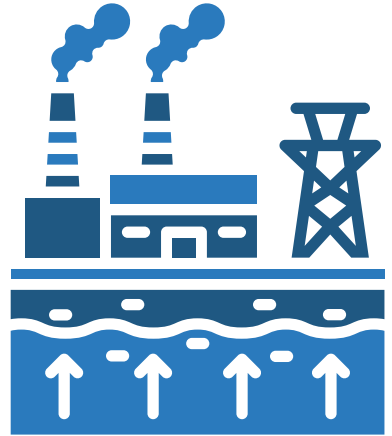


Gemstones



Activity 3

Renewables and Non-Renewables



Identify whether the statements below are true or false. Circle your answer.

Anything useful that comes from nature is referred to as a natural resource.

TRUE

FALSE

A renewable resource is one that is limited in supply and cannot be replaced in a short period of time.

TRUE

FALSE

It can take millions of years to produce some of our natural resources.

TRUE

FALSE

Burning fossil fuels releases carbon dioxide into the air.

TRUE

FALSE

The energy produced from biomass (such as wood and organic waste) cannot be used for heating and cooking.

TRUE

FALSE

Activity 1 ANSWER SHEET

Renewable Energy Sources

Identify the specific energy described on each card. Write your answer in the space provided.

This is the energy created from moving or falling water.

ANSWER:
Hydroelectric

Moving air that works with turbines to convert it into mechanical power.

ANSWER:
Wind

This energy comes from inside of the Earth.

ANSWER:
Geothermal

This energy source comes from organic material formed from decaying plants and animals.

ANSWER:
Biomass

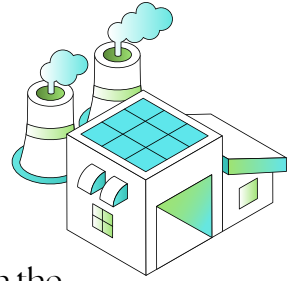
This type of energy comes from the sun.

ANSWER:
Solar



Activity 2 ANSWER SHEET

Non-Renewable Energy Sources



Draw a line from Column A to Column B to match the descriptions.

Column A

Column B

A black or dark brown sedimentary rock that is a combustible fuel source.

Coal



Minerals that are cut and polished, to be used as materials for jewellery and semiconductors.

Petroleum



A metal found in the Earth's crust, used as fuel in reactors of nuclear power plants.

Soil



A fuel formed from the remains of ancient marine organisms, processed into products such as petrol.

Uranium



A mixture of minerals and organic matter, where plants grow and water flows.

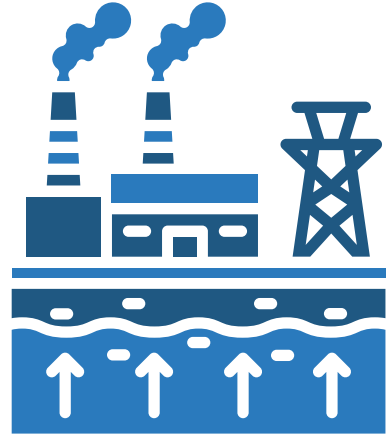
Gemstones



Activity 3 ANSWER SHEET

Renewables and Non-Renewables

Identify whether the statements below are true or false. Circle your answer.



Anything useful that comes from nature is referred to as a natural resource.

TRUE

FALSE

A renewable resource is one that is limited in supply and cannot be replaced in a short period of time.

TRUE

FALSE

It can take millions of years to produce some of our natural resources.

TRUE

FALSE

Burning fossil fuels releases carbon dioxide into the air.

TRUE

FALSE

The energy produced from biomass (such as wood and organic waste) cannot be used for heating and cooking.

TRUE

FALSE